

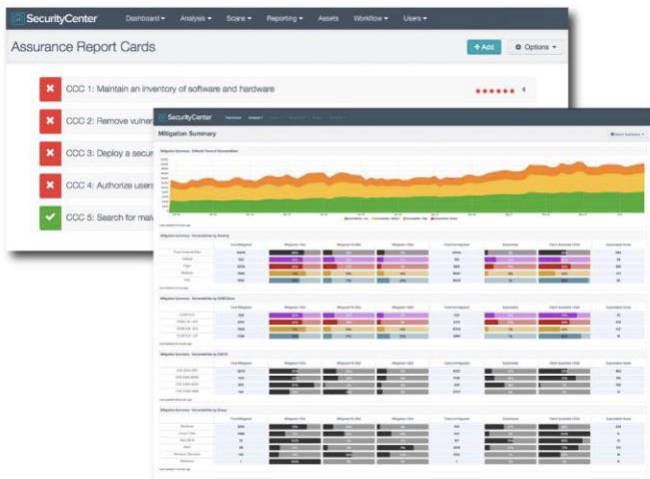
*"It's a home-run with an all-in-one Tenable solution that enables me to prioritize security risks and assess security posture of my enterprise based on business objectives at any time."*

- Healthcare Service Provider

## VULNERABILITY MANAGEMENT MANAGED ON-PREM

Changing IT landscapes and evolving cyber threats have made periodic scanning and compliance audits insufficient to protect businesses against modern cyberattacks. To keep your network safe, you need a vulnerability management solution that gives you complete visibility into your attack surface so you can manage and measure your cyber risk.

Built on leading Nessus technology, Tenable.sc™ Continuous View is a market-leading Cyber Exposure platform, managed on-prem, that gives you a comprehensive picture of your network. You get real-time, continuous assessment of your security and compliance posture so you can discover unknown assets and vulnerabilities, monitor unexpected network changes and prioritize weaknesses to minimize your cyber risk and prevent breaches. It is the only solution that brings together discovery of on premises and cloud-based assets, active and passive vulnerability assessment, configuration auditing, change detection, malware detection, threat intelligence, analysis of network and user activity and vulnerability prioritization.



*Highly customizable dashboards, reports, workflows and security policies to suit your specific business needs*

Tenable.sc includes over 350 pre-built, highly customizable dashboards and reports to give you immediate insight into your security compliance, effectiveness and risk. You can continuously measure, analyze and visualize the effectiveness of your security program, based on high-level business objectives and underlying customizable policies that executives care about.

## TENABLE RESEARCH

The Tenable Research team provides frequent updates of vulnerability and threat intelligence, advanced analytics, security/compliance policies and dashboards/reports to all Tenable.sc customers. This out-of-the box content is based on industry and customer best practices gathered by Tenable, putting the power of our security research team at your disposal. This content is part of the Tenable.sc subscription.

## KEY BENEFITS

- Always know when new or changed assets alter your attack surface
- Gain broad visibility across your IT infrastructure, including endpoints, servers, databases, mobile devices, domain controllers, network devices, virtual applications and the cloud
- See what others miss with visibility into transient, difficult to reach and unsafe to scan systems
- Prioritize vulnerabilities with the greatest impact, and understand the likelihood a given vulnerability will be exploited in the next 28 days, using the Tenable Vulnerability Priority Rating (VPR).
- Discover detailed insights with automated analysis of vulnerability and configuration data that is enhanced with patching status, known exploits, threat intelligence and knowledge of suspicious network traffic and user behavior
- Focus on what matters by quickly identifying exploitable weaknesses
- Communicate security posture using Assurance Report Cards
- Document compliance with industry standards and regulations

## KEY FEATURES

- **Assurance Report Cards:** continuously measure the effectiveness of customer-defined security and compliance policies based on business objectives to identify and close potential gaps.
- **Highly customizable dashboards/reports:** HTML-5 based user interface satisfies the specific needs of CISOs, security management, analysts and practitioners/operators.
- **Vulnerability Priority Rating (VPR):** combines threat intelligence and machine learning to determine the likelihood a vulnerability will be exploited in your unique environment.
- **Broad asset coverage:** assess servers, endpoints, network devices, operating systems, databases and applications in physical, virtual and cloud infrastructures.
- **Continuous asset discovery:** discover all mobile devices, physical, virtual and cloud instances on the network, including unauthorized assets.
- **Dynamic asset classification:** group assets based on policies that meet specific criteria: e.g., Windows 7 assets with vulnerabilities > 30 days old.
- **Vulnerability management:** multiple scanning options, including passive network monitoring, non-credentialed and credentialed scanning for deep analysis and configuration auditing.
- **Agent-based scanning:** available for organizations to more easily scan mobile and hard to reach assets.
- **Malware detection:** leverage built-in threat intelligence feeds (malware indicators, blacklists) to identify advanced malware.
- **Assess network health:** continuously monitor network traffic looking for suspicious traffic to/from vulnerable systems/ services, unknown devices, botnets, command/control servers.
- **Anomaly detection:** use statistical and anomalous behavior analysis techniques on external log sources, to automatically discover activity that deviates from the baseline.
- **Advanced analytics/trending:** provide contextual insight and actionable information to prioritize security issues associated with security posture of all enterprise assets.
- **Notification:** configurable alerts for administrators to take manual actions via emails, notifications, trouble tickets or to take automated actions via APIs.
- **Streamlined compliance:** pre-defined checks for industry standards and regulatory mandates, such as CERT, DISA STIG, DHS CDM, FISMA, PCI DSS, HIPAA/HITECH and more.
- **Integrations:** out-of-box integrations with patch management, MDM, threat intelligence and other third-party products, or use Tenable.sc APIs to develop custom integrations.

## THE TENABLE.SC ADVANTAGE

Customers choose Tenable.sc because it helps them:

- **Eliminate blind spots** resulting from unmanaged assets and weaknesses that increase your risk profile and are often the root of security issues.
- **Increase efficiency** informed by complete context to quickly understand and prioritize weaknesses.
- **Assure security and prove compliance** to all stakeholders using specific metrics that clearly communicate status.
- **Speed remediation** with the ability to prioritize vulnerabilities with the highest likelihood of impact to your organization

## TENABLE.SC EDITIONS

### Tenable.sc

Tenable.sc is an on-prem managed Cyber Exposure platform that includes multiple Nessus® scanners, the world's most widely deployed vulnerability scanner. It provides the most comprehensive visibility into the security posture of distributed and complex IT infrastructure.

### Tenable.sc Continuous View™

Tenable.sc Continuous View is the market-leading Cyber Exposure platform for organizations who need to manage their data on-prem. It integrates Tenable.sc along with multiple Nessus Network Monitor sensors and network traffic and event monitoring to provide comprehensive continuous network monitoring.

---

**For More Information:** Please visit [tenable.com](https://tenable.com)

**Contact Us:** Please email us at [sales@tenable.com](mailto:sales@tenable.com) or visit [tenable.com/contact](https://tenable.com/contact)